



Windows Commodity Management System

From
Superior Technologies Weighing & Controls Inc.

We've got what you need! /

..... to Customized for YOUR plant

*Increase your load-out
speed with WinCMS™*

*Plug compatible with
CMS-16000 / CMS-16i*



**BulkWeigher Control
Sampler Interface**

Tracks:

- Inventory
- Moisture
- Dockage
- Protein

WinCMS ä by Superior Technologies is a multi-tasking real time Windows-based HMI (Human Machine Interface) control package designed specifically for controlling a single BulkWeigher and / or truck scale within a grain elevator facility.

The WinCMS package communicates with a PLC (Programmable Logic Controller) to sequence BulkWeigher gate operation and logs scale weights according to Legal-for-Trade specifications.

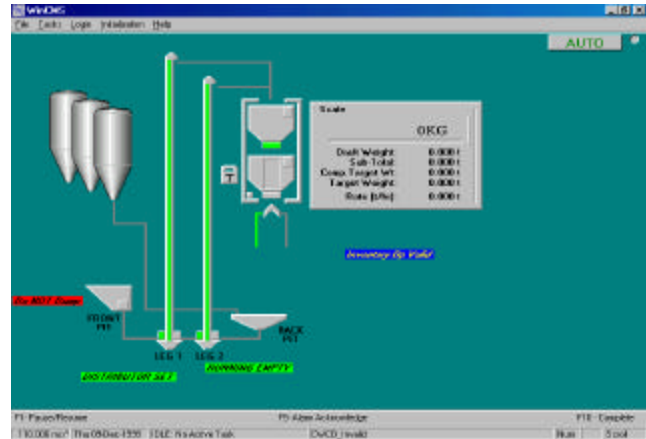
The WinCMS software offers intuitive tasking screens with fast data entry and lookup lists to start shipping, receiving or audit tasks. All task information is logged to a database.

WinCMS™

Windows Commodity Management System

Features

- Supports truck scale receiving
- Enhanced graphic user interface
- Employs standard CGC grain codes
- Plug compatible with CMS-16000/CMS-16i
- Bin inventory and dockage/moisture/protein tracking
- Remote system support/upgrades available via modem
-
- Ticket reprinting from a historical transaction database
- Supports *rapid ship* and *rapid receive* via the BulkWeigher
- Unlimited task shelving for preprogrammed audit, shipping or receiving events
- System databases allow for easy storage/retrieval of producer and transaction data
- Short ticket format printing (each draft is electronically stored for Legal-for-Trade purposes)
- Supports several PLC communication protocols including:
 - Modbus RTU
 - CCM
 - Ethernet
- Optional report package available
- Optional data export feature
- Additional enhancements are found in our high-end QWICC HMI package



Can be customized for unique plant configurations!

Weighing and Process Control Specialists since 1976

ISO 9001
ISO 9001

WinCMS ä, the product value is ... Superior!