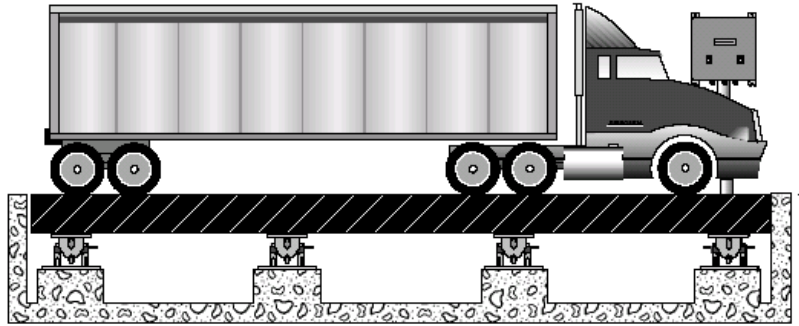


MISTS – Management Information System for Truck Scales

MISTS is a software package developed by Superior Technologies Weighing & Controls Inc. (ST) intended to facilitate managing truck weighing transactions. The software prompts the operator to enter product-related data and automatically captures and stores weighing data such as weight, date, time, etc. In addition, the system can incorporate (optional) bar code devices to permit efficient error-free data entry. This system is also capable of generating a wide variety of transaction related reports. The software is Microsoft Windows™ based and operates on a PC that is interfaced to the electronic read-out of a Truck Scale.



The software is Microsoft Windows™ based and operates on a PC that is interfaced to the electronic read-out of a Truck Scale.

The major Software Features of the system include:

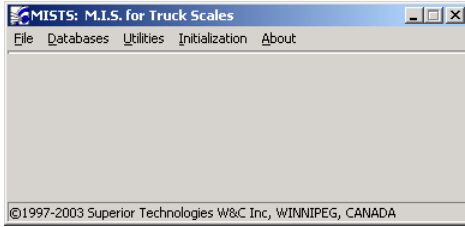
- Supports (product) incoming and outgoing transactions.
- Supports “stored” Truck Tare (empty) weight operation. This mode avoids the need to re-weigh empty trucks.
- System prints a scale ticket for incoming and outgoing weighing transactions, including time, date, etc.
- A Trucker ID can be associated with a particular Customer, Product, or Transport Company in order to minimize repetitive data entry if this information never changes.
- Transaction Reports. By specifying a date interval (to/from date), a summary break down on Products, Truckers, and Customers can be generated. Individual Products, Truckers or Customers can also be reported upon.
- Intelligent ASCII data export of Transaction Records. Transaction data can be exported to other software packages such as Microsoft Excel, etc., for additional analysis.
- System can print bar code labels for Trucker ID cards. There is no need to purchase additional software to print labels.
- Runs in the Windows™ 95/98/2000/XP Operating System Environment.

The system is available with a variety of Options to enhance your data collection requirements:

- Bar Code Reader, Magnetic Stripe Reader, RF-Tag Hardware
- Remote Industrial Keypad Data Entry (for unmanned operation)
- Remote Display
- Traffic Lights and Control
- Vehicle Loop Detectors
- Modem (for data transfer and/or support)
- Can operate with multiple Truck Scales.
- Unmanned Operation. The truck driver can process a weighing transaction without the need of a scale operator.

Screen Layouts

The main application window integrates all File, Database and Utility functions on one screen, keeping relevant information at the operators fingertips at all times.



Ticket Data Entry

Easily enter your Ticket data from selection lists and capture your scale readings quickly and error-free. Data entry is designed around quick “keyboard entry” as opposed to “mouse clicking”.

Ticket No	67
Product ID	2000
Product Description	2000 Limestone
Truck ID	3000
Truck Description	3000 Stone 40mm
COD Customer	<input type="checkbox"/>
Customer ID	1000
Customer Full Name	Jaggerz, Mick
Sold To Line1	123 Oak St.
Sold To Line2	Winnipeg, MB
Sold To Line3	
Clear Ship To:	
Ship To Line1	Airport Runway North 12
Ship To Line2	North Central Work Area
Ship To Line3	
Delivery Zone	T2A
F2 - GROSS Weight	24486 24486KG
Tare Weight	12550
Net Weight	11,936
Comments	

Customer ID	Name	Addr L1
1000	Jaggerz, Mick	123 Oak St.
1234	Michael Smith	
2000	John Deere	
3000	Ford, Harrison	
5544	A. Sharkey	

Customer ID: 1000
Name: Jaggerz, Mick
Addr L1: 123 Oak St.
Addr L2: Winnipeg, MB
Addr L3:
Phone No: (204)661-6985
Fax No: (306)958-7458
Memo: Airport Runway North 12
North Central Work Area

Customer Database

The Customer Database stores information about the customer for quick retrieval when processing a ticket.

Truck ID	Owner Name
0370669	Plawek, Walter
0370725	Gauvier, Jeremy
0370943	Tremblay, Mario
0370997	Coden, James

Truck ID: 0370943
PIN No: 7777
Owner Name: Tremblay, Mario
Addr L1: 123 Elie Rd
Addr L2: Elie, MB
Addr L3: ROU 0M0
Phone No: (204)555-7771
Fax No: () -
Memo:
Get Tare: Stored Tare: 10000 Use Stored Tare
Date Time of Tare: 19-Oct-1997 12:28 PM
Customer ID: 5544
A. Sharkey

Truck Database

The Truck Database stores truck information and holds a stored tare weight for faster load processing across the Truck Scale. If a truck is always related to a specific customer, that Customer's ID can be associated with this truck, permitting even faster data entry when processing a ticket.

Product Database

Update Add Delete Listing Exit

1000

Product ID	Description
1000	Stone 20mm
2000	Limestone
300	Limestone
3000	Stone 40mm
4000	Asphalt
5000	Sand

Product ID: 1000
 Description: Stone 20mm
 Memo:
 Instructions:



Product Database

The Product Database contains all the products used for quick and easy lookup when processing a ticket.

Transaction Database

Update Add Delete Print Reports Exit

67

Trans No	TimeDate Out	Product ID	Product Description	Truck
67	11/20/2003 12:09:23	2000	Limestone	3674
66	8/6/2003 1:51:29 PM	4000	Asphalt	0367
65	5/14/2003 6:02:31 PM	4000	Asphalt	AA
64	5/14/2003 6:01:37 PM	2000	Limestone	AA
63	5/14/2003 6:01:20 PM	1000	Stone 20mm	AA
62	5/13/2003 4:51:19 PM	1000	Stone 20mm	AA

Trans No: 67
 Product ID: 2000
 Description: Limestone
 Truck ID: 367484
 Truck Description: Fitzgerald, Edmund
 In: 20-Nov-2003 12:07 PM
 Out: 20-Nov-2003 12:09 PM
 Customer ID: 1000
 Customer: Jaggerz, Mick
 Operator ID: Last Edit Date: 20-Nov-2003 12:03 PM
 GROSS Weight: 24486 kg
 TARE Weight: 12550 kg
 Edit Count: 0
 NET Weight: 11.936
 Transaction Type: 0

Transaction Database



The Transaction Database holds all the (ticket) load data processed when the vehicle is weighed on the Truck Scale. The data is reported on and transaction records can be exported to other software systems for processing.

Transaction Reports

FROM: April 01, 2003 TO: November 20, 2003

Product Report | Customer Report | Truck Report

ALL Products
 Specific Product: 1000 Stone 20mm

1000 Stone 20mm
 2000 Limestone
 300 Limestone
 3000 Stone 40mm
 4000 Asphalt
 5000 Sand

Force new Page for each Product
 Summary Only

Product Report Interval: 234 days



Transaction Reports

Reports are generated based on the transaction data. Any date range can be specified via selecting the FROM and TO dates from the calendar controls. Product, Customer and Truck reports can be generated and displayed in either Summary or Detail formats.

Initialization



The initialization section provides a number of parameters to control weighing, hardware and security access.

Initialization

Scale Weight Setup | Printer Setup | Security | Misc Setup

Scale Weight Setup:

Minimum Capture Weight: 5000 kg
 Minimum NET Weight: 500 kg

20-Nov-2003 12:17 PM	Bel Acres Quarry PO 32,R.R.2 Winnipeg, MB R3C3E6	Page: 1
Transaction Product Report		
Summary Report on: "ALL PRODUCTS"		
From: 01-Apr-2003 To: 20-Nov-2003		
PRODUCT: 1000 - Stone 20mm	1st Wt 2nd Wt	Net Wt
Loads: 13	Total for Stone 20mm:	424,399
PRODUCT: 2000 - Limestone	1st Wt 2nd Wt	Net Wt
Loads: 7	Total for Limestone:	189,841
PRODUCT: 3000 - Stone 40mm	1st Wt 2nd Wt	Net Wt
Loads: 3	Total for Stone 40mm:	98,700
PRODUCT: 4000 - Asphalt	1st Wt 2nd Wt	Net Wt
Loads: 2	Total for Asphalt:	32,200
PRODUCT: 5000 - Sand	1st Wt 2nd Wt	Net Wt
Loads: 1	Total for Sand:	42,400
End of Report		



Summary Report on "All Products"

Product quantities are summarized in a concise format.

Report on "All Products"



If more detail is required, the same report can be displayed in detail mode, providing information on all the individual transactions that contribute to the final totals.

20-Nov-2003 12:13 PM	Bel Acres Quarry PO 32,R.R.2 Winnipeg, MB R3C3E6	Page: 1
Transaction Product Report		
Report on: "ALL PRODUCTS"		
From: 01-Apr-2003 To: 20-Nov-2003		
PRODUCT: 1000 - Stone 20mm	1st Wt 2nd Wt	Net Wt
Tran#: 43 n/a	8,400 50,000	41,600
Truck: AA AAA Truck		
Cust: 1000 Mick Jagger		
Tran#: 44 n/a	8,400 50,000	41,600
Truck: AA AAA Truck		
Cust: 1000 Mick Jagger		
Tran#: 45 n/a	8,400 50,000	41,600
Truck: AA AAA Truck		
Cust: 1000 Mick Jagger		
Tran#: 50 n/a	8,400 50,000	41,600
Truck: AA AAA Truck		
Cust: 1000 Mick Jagger		
Tran#: 51 n/a	7,600 50,000	42,400
Truck: BB		
Cust: 1000 Mick Jagger		
Tran#: 52 n/a	7,600 50,000	42,400
Truck: BB Jim Baker		
Cust: 1000 Mick Jagger		
Tran#: 55 n/a	8,400 50,000	41,600
Truck: AA AAA Truck		
Cust: 1000 Mick Jagger		
Tran#: 58 n/a	23,100 48,700	25,600
Truck: AA AAA Truck		
Cust: 1000 Mick Jagger		
Tran#: 59 n/a	23,100 48,700	25,600
Truck: BB Jim Baker		
Cust: 1000 Mick Jagger		
Tran#: 60 n/a	23,100 48,700	25,600
Truck: AA AAA Truck		
Cust: 1000 Mick Jagger		
Tran#: 61 n/a	23,101 33,500	10,399
Truck: AA AAA Truck		
Cust: 1000 Mick Jagger		

For more information please contact:

SUPERIOR TECHNOLOGIES WEIGHING & CONTROLS INC.

1673 Dugald Rd. Winnipeg, MB. Canada

Ph: (204) 661-6482

Fax: (204) 663-4934

Email: info@superiortech.com

www.superiortech.com